

Vigilant Guard 17

CLEARINGHOUSE EXERCISE PARTICIPATION DIRECTIONS FOR: ARCGIS ONLINE

Rosinski, Anne@conservation.ca.gov

WHAT DOES VIGILANT GUARD 17 PARTICIPATION USING ARCGIS ONLINE MEAN

You will view the play's Essential Elements of Information in ArcGIS Online from the following applications connected to XchangeCore: ArcGIS Online with XchangeCore Connector, Web EOC, and SpotOnResponse.

What does participation through ArcGIS Online mean?

- Connect Clearinghouse XchangeCore to your ArcGIS Online
- View Incidents or Observations
- View attachments (photos, videos, .pdf, etc.) associated with observations
- Take a screenshot of what you see to document your participation and
 - Name it XXXXXX
 - Send it to anne.rosinski@conservation.ca.gov

Note: These instructions are for viewing Clearinghouse XchangeCore data in ArcGIS Online. Other instructions are available to add information from AGOL to XchangeCore.

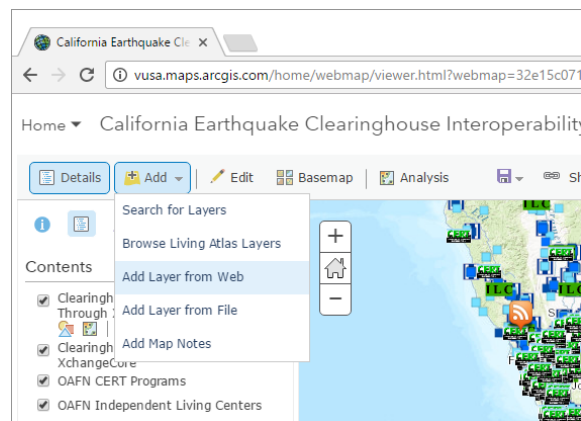
GeoRSS feeds are the way to bring information IN to AGOL. Follow the steps below to embed live updates into your map.

1. Starting with a new map (if you have an existing map you may skip to step 2)

- a. Sign in to AGOL
- b. Home
- c. Map
- d. Right side of window, next to your name, click on New Map
- e. Yes
- f. Save Map
- g. Name
- h. Tag
- i. Save Map

2. In your map

- a. Add
- b. Add layer from Web
- c. In Add Layer from Web dialog box, choose GeoRSS (or as appropriate e.g. KMZ for KMZ) from dropdown
- d. Paste link into box. The link that you will paste into AGOL to add a GeoRSS feed is a



template that follows this standard format, and adding it to your map will bring ALL XchangeCore data into a separate layer:

AGOL ALL incidents:

<https://xchangecore.spotonresponse.com/uicds/pub/search?productType=Incident&format=rss>

AGOL ALL observations

<https://xchangecore.spotonresponse.com/uicds/pub/search?productType=SOI&format=rss>

You will see the feed you just added to your map show up as “XchangeCore GeoRSS Feed” on the left side of your map

3. Symbolizing the XchangeCore Information

- Click on the small arrow to the right of the GeorSS feed
- Choose rename; add name
- Ok
- Click on the small arrow to the right of the feed you just re-named
- Change style
- Click on symbols
- Select style
- Ok
- SAVE

4. Viewing Observation Photos, Etc.

If there are photos, videos, .pdf files, etc. associated with the observation, the popup window will include a [link](#) to the attachment (highlighted in blue). Right click on the link or copy/paste the link to the attachment into your browser.

