

UNCLASSIFIED



Disaster Events: Fusion Center GEO Questions

Marie E. Kennedy, GEOINT, SD-LECC

22OCT2014

Presentation is **UNCLASSIFIED**

SAN DIEGO LAW ENFORCEMENT COORDINATION CENTER

UNCLASSIFIED

Agenda



SAN DIEGO LAW ENFORCEMENT COORDINATION CENTER

Assumptions

Questions

Decision-making

Timeline

Information Needs

Example Information Needs

Overview



Assumptions



SAN DIEGO LAW ENFORCEMENT COORDINATION CENTER

Presidential Disaster Declaration (PDD) Status

FEMA as Lead Federal Agency

Complex Disaster

Multiple emergency response types

Coordination across many jurisdictions

Request-based System

If a requirement is needed, it has to be requested in order to be fulfilled



First Questions: Decision-making



SAN DIEGO LAW ENFORCEMENT COORDINATION CENTER

Who is in charge? Of what?

Define supported and supporting relationships
Legal and funding authorities

How will the receiver use this information to make their decisions?

Data versus product
User's communication vehicle (data rate, tool)
Tailor data/product service for user familiarity



Second Questions: Timeline



SAN DIEGO LAW ENFORCEMENT COORDINATION CENTER

How long do we have to make what decisions?

Can current threat be mitigated?

What is the operational timeline of the supported organization?

Who is waiting on us to make their decisions?

Architect information sharing for supported and supporting relationships



Third Questions: Information Needs



SAN DIEGO LAW ENFORCEMENT COORDINATION CENTER

What are my Priority Information Requirements (PIRs)?

Operations perspective – what are the primary options for leadership to direct resources in order to respond?

Intelligence perspective – what are the core issues/threats of current situation? And involving near-future operations?

What observable Essential Elements of Information (EEl)s answer my PIRs?

Where are current operations?

What is the communication status between responding partners?

What is the status of energy access? Roads?

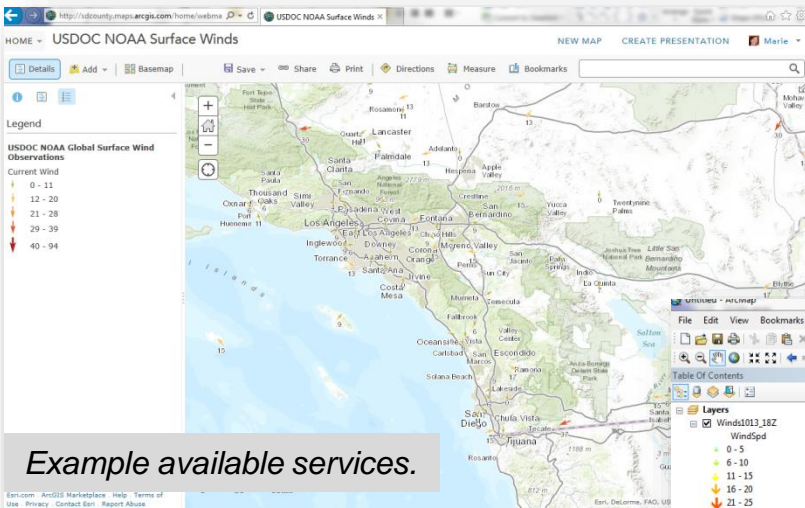
What people, infrastructure could still be threatened?



Example Information Needs

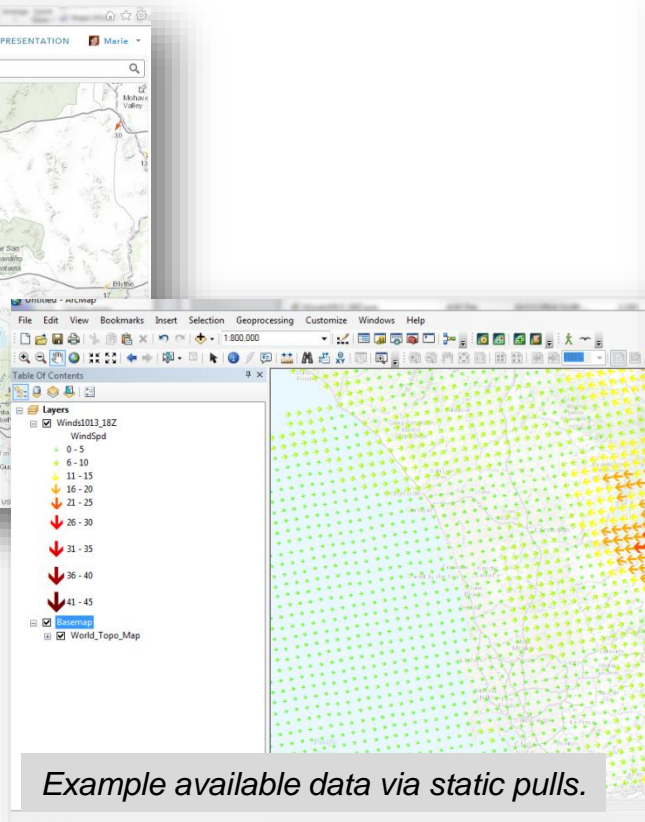


Usable weather information



Example available services.

Data issue: Current dynamic services do not serve high resolution data. Requires static pulls.



Example available data via static pulls.

National Weather Service Forecast Office

San Diego, CA

Home News Organization FAQ Share

Weather and Hazards Data Viewer

View Our GIS Data on Your Web Browser!

- Click Here to View This Data
- Click Here for More Info

2.5KM HI Res GIS Compatible Digital Forecast Data For San Diego, CA

Click Here for Information and Help

Send Feedback

Color Scheme (.avi) Files

Click Here For Other Areas

Max/Min Temp and RH by Forecast Day Info

- Day1 (Oct 13) 0.21MB
- Day2 (Oct 14) 0.22MB
- Day3 (Oct 15) 0.22MB
- Day4 (Oct 16) 0.22MB
- Day5 (Oct 17) 0.22MB
- Day6 (Oct 18) 0.22MB
- Day7 (Oct 19) 0.22MB
- Days 1-3 (.zip file) 0.96MB

Wind Point Data (Spd&Dir) by Forecast Hour Info

How to Make Wind Arrows (.pdf)

Wind Arrows Legends: 30knots 40knots 45knots 45knots-small-arrows

- 00hr (Oct 13 05am) 0.11MB
- 03hr (Oct 13 08am) 0.11MB
- 06hr (Oct 13 11am) 0.11MB
- 09hr (Oct 13 02pm) 0.11MB
- 10hr - 24hr (Oct 13 11pm) 0.19MB
- 24hr - 30hr (Oct 14 05am) 0.19MB
- 39hr (Oct 14 08pm) 0.11MB

Example available data via static pulls.



Example Information Needs

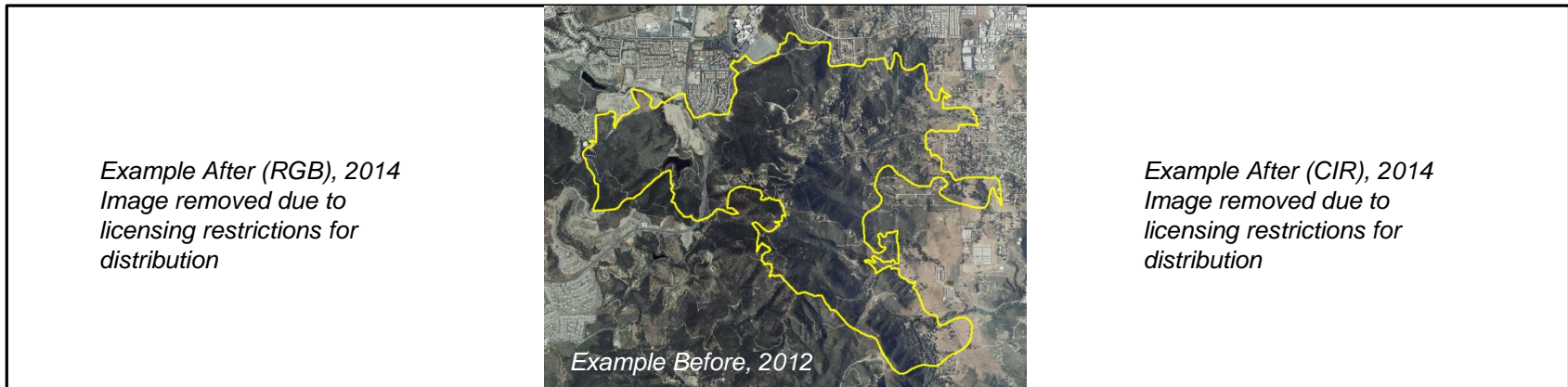


Usable before/after images

High location accuracy for mosaic/pan-sharpening

Real-color for presentation

Appropriate band mix for analysis (e.g., CIR for fire)



Data issue: Original after imagery was provided in GeoTIFFs without usable geometries to mosaic/pan-sharpen; files usable only after re-downloading as NITFs



Example Information Needs



SAN DIEGO LAW ENFORCEMENT COORDINATION CENTER

Baseline location understanding

Non-proprietary, better quality geocoders for address locations

Operations tracking

Ease of integrating/sharing Automatic Vehicle Locators (AVL)

NICS operational data to be integrated into long-term program

Critical infrastructure

Method to update HSIP Data with higher-quality, local information



Overview



SAN DIEGO LAW ENFORCEMENT COORDINATION CENTER

Process is primary

Who is in charge of what decisions?

How can they receive and use information?

When do they need information?

What information do they need?



Questions?



SAN DIEGO LAW ENFORCEMENT COORDINATION CENTER

marie.kennedy@sd-lecc.org
(858) 495-7254

