



CALIFORNIA EARTHQUAKE CLEARINGHOUSE

PARTICIPATION IN THE

Ardent Sentry 15 (DOD)/California Capstone 15 (CalOES)/
SoCal Ex 15 (FEMA)

MAY 11-15, 2015

EXERCISE HIGHLIGHTS



- 2008 ShakeOut Scenario: M7.8 Earthquake on Southern San Andreas Fault
- Exercise to take place in real-time, May 11-15, 2015
- Participation with Clearinghouse is self-paced
- Clearinghouse participation focus on Cajon Pass and Los Angeles County
 - Emphasis on Roads and HAZMAT incidents
 - I-15 through Cajon Pass, and I-10, from Palm Springs to intersection of I-10 and I-15, in vicinity of Rancho Cucamonga
- UAVSAR flight NASA JPL – Monday, 5/11
- Reconnaissance overflight with CHP – Tuesday, 5/12
- Imagery collection overflight with CA Nation Guard – Tuesday, 5/12
 - Imagery collected by CANG will be shared out through multiple venues, including USGS Hazards Data Distribution System (HDDS)
<http://hddsexplorer.usgs.gov/> and <http://cmt.usgs.gov>

EXERCISE HIGHLIGHTS cont.



- Cal OES Air Coordination Group Liaison and Officers meeting on Wednesday, 5/13
- Clearinghouse physical location open 5/14, 10:00-2:00, PDT, located at JFTB HQ, Building 244, 11206 Lexington Dr., Los Alamitos, CA 90720
- Become a Clearinghouse Disaster Service Worker to receive limited liability coverage during earthquake response activation
- Information sharing for improved situational awareness, all week May 11-15, 8:00 a.m. – 5:00 p.m.
- Exercise debrief, Friday, May 15, 10:00 a.m. (webex)
- Exercise schedule and step-by-step directions will be provided for participation using various tools

Clearinghouse Exercise Goals – Overflight



- Benefit = Get Clearinghouse Mission Assignments approved so personnel in the air more quickly
- For the May 2015 NLE we are testing Mission Tasking process with Cal OES Air Coordination Group, Cal OES Operations Branch, and Cal EOC
 - Mission Request for reconnaissance flight with CHP over Cajon Pass
 - Mission Request for imagery collection with CA Air National Guard over Cajon Pass
- Overflight Success =
 - Follow Mission Request process and complete Mission Request form correctly
 - Mission Request accepted by Operations Branch and forwarded to Cal OES ACG

Clearinghouse Exercise Goals – Clearinghouse Operations



- Benefit = Better coordination among participating Clearinghouse organizations (subject matter experts in the field and responders in EOC)
- Meet other Clearinghouse partners who could participate in earthquake response
- Ask questions, learn about Clearinghouse capabilities, resources, and goals
- Be sworn in as a Clearinghouse Disaster Service Worker and obtain limited liability coverage for response



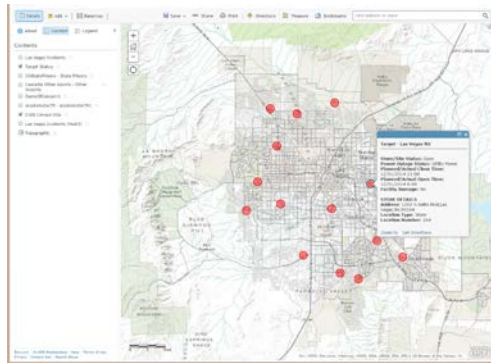
Clearinghouse open
Thursday, May 14, 2015
10:00 a.m. – 2:00 p.m.

JFTB HQ
Building 244
11206 Lexington Dr
Los Alamitos, CA
90720

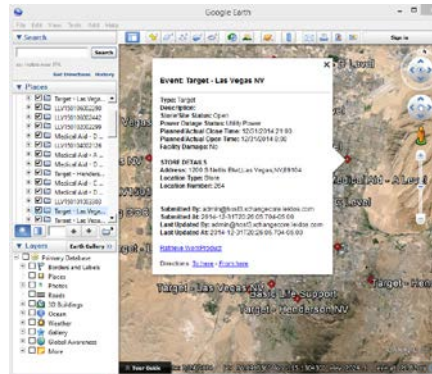
Incident Situational Awareness Exchanged



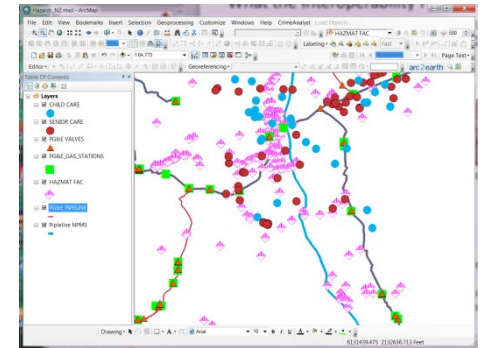
AGOL



Google Earth



ARCMAP

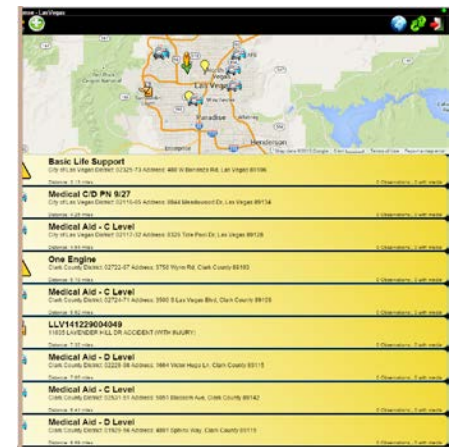


Incidents Shared to Common Operational Pictures ArcGIS Online and Google Earth

Event ID	Title	Event Clear Time	Event Type	Jurisdiction	Status	Details / Map	Update
2522	LLV14123102794	01/19/2015 01:24:41	Incident	Las Vegas	Closed	Detail	Update
2522	LLV141231028474	01/19/2015 01:36:32	Incident	Las Vegas	Closed	Detail	Update
2523	LLV141231028254	01/19/2015 01:36:31	Incident	Las Vegas	Closed	Detail	Update
2526	LLV141231028333	01/19/2015 01:36:46	Incident	Las Vegas	Closed	Detail	Update
2517	LLV141231028296	01/19/2015 01:34:52	Incident	Las Vegas	Closed	Detail	Update
2520	LLV141231028999	01/19/2015 01:54:52	Incident	Las Vegas	Closed	Detail	Update
2520	LLV141231029195	01/19/2015 01:54:52	Incident	Las Vegas	Closed	Detail	Update
2532	LLV141231028989	01/19/2015 01:24:41	Incident	Las Vegas	Closed	Detail	Update
2520	LLV141231028273	01/19/2015 01:36:31	Incident	Las Vegas	Closed	Detail	Update
2525	LLV141231028266	01/19/2015 01:36:46	Incident	Las Vegas	Closed	Detail	Update
2524	Target - Las Vegas NV	12/19/2014 20:26:12	Target	Las Vegas	Closed	Detail	Update
2523	Target - Las Vegas NV	12/19/2014 20:26:04	Target	Las Vegas	Closed	Detail	Update
2522	Target - Las Vegas NV	12/19/2014 20:25:52	Target	Las Vegas	Closed	Detail	Update
2521	Target - Las Vegas NV	12/19/2014 20:25:29	Target	Las Vegas	Closed	Detail	Update
2520	LLV141231028009	01/19/2015 01:36:32	Incident	Las Vegas	Closed	Detail	Update
2518	Target - Las Vegas NV	12/19/2014 20:25:16	Target	Las Vegas	Closed	Detail	Update
2516	Target - Henderson NV	12/19/2014 20:24:59	Target	Henderson	Closed	Detail	Update
2515	Target - Las Vegas NV	12/19/2014 20:24:45	Target	Las Vegas	Closed	Detail	Update
2514	Target - Henderson NV	12/19/2014 20:24:19	Target	Henderson	Closed	Detail	Update
2513	Target - Las Vegas NV	12/19/2014 20:24:34	Target	Las Vegas	Closed	Detail	Update
2512	Target - Las Vegas NV	12/19/2014 20:24:27	Target	Las Vegas	Closed	Detail	Update
2511	Target - Henderson NV	12/19/2014 20:24:16	Target	Henderson	Closed	Detail	Update
2541	Basic Life Support	01/19/2015 01:35:00	Event	92724-50	Closed	Detail	Update
2542	Target - North Las Vegas NV	12/19/2014 20:24:01	Target	Las Vegas	Closed	Detail	Update
2540	Target - Las Vegas NV	12/19/2014 20:23:53	Target	Las Vegas	Closed	Detail	Update



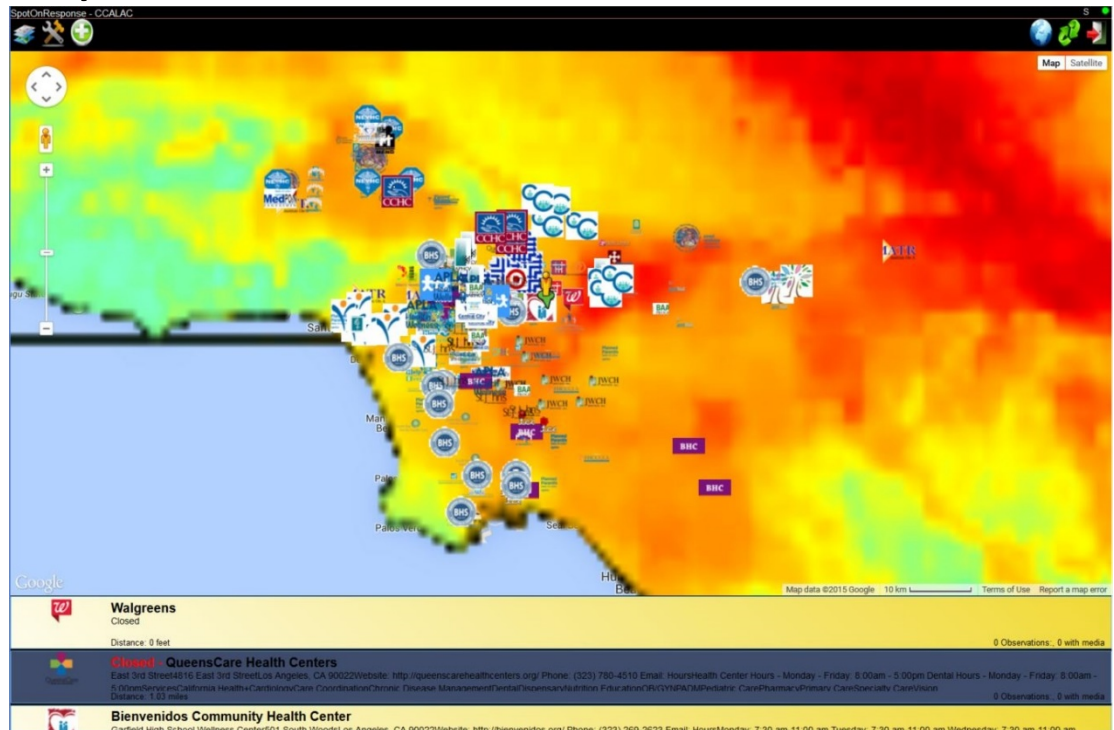
Incidents Exchanged between WebEOC/CalEOC and SpotOnResponse



Why is Incident Situational Awareness Important?



- Better coordination between Clearinghouse scientist and engineer subject matter experts in the field and emergency managers in Emergency Operations Centers
- EOC managers can make informed decisions about logistics and resources when they have real-time information about the disaster impacts



Clearinghouse Exercise Goals – Information Sharing



- Benefit = Improved Situational Awareness
- For the May 2015 NLE, you will be asked to share Essential Elements of Information, using various applications, connected through XchangeCore, to provide situational awareness.
- Exercise-specific directions will be provided; your input should take no more than 5-10 minutes to participate
- What does participation mean?:
 - Connect Only
 - Connect and pull data (1 element/1 time)
 - Connect and push data (1 element/1 time)
 - Connect and pull and push data (1 element/1 time)
 - Connect and pull and push data (>1 element or >1 time)

Information Sharing Success



- We are NOT demonstrating all the capabilities of either XchangeCore, or the connected applications (ArcGIS Online, Google Earth, SpotOnResponse, Web EOC)
- Overall Exercise Success = points on the maps
 - XchangeCore connector for ArcGIS Online Success =
 - Work with point features
 - See what your information looks like in other applications
 - Bring information into your map from other applications
 - SpotOnResponse Success =
 - Add new incident to map
 - Update incident on map with photo or attachment
 - Google Earth Success =
 - See reports of incidents and updates from all other connected applications

PREVIEW OF EXERCISE PLAY SPREADSHEET



Clearinghouse exercise play timeline v6.xlsx - Excel

FILE HOME INSERT PAGE LAYOUT FORMULAS DATA REVIEW VIEW ACROBAT Rosinski, Anne@DOC

Clipboard Font Alignment Number Styles Cells Editing

L33

NEED HELP OR HAVE A QUESTION? CALL 1-866-828-5695 passcode: 8077172 or contact anne.rosinski@conservation.ca.gov

	County	Type of incident to report	DAY 1 05/11/2015 -	DAY 2 5/12/2015	DAY 3 5/13/2015	DAY 4 5/14/2015	DAY 5 5/15/2015	Remarks	Suggested description
1									
2	Los Angeles	HAZMAT EF 10	10:45 PDT					See Time Sensitive HAZMAT worksheet Row 3; Use SOR filter function search for location and update SOR Incident	
3	Riverside	HAZMAT EF 10	10:00-11:00					See Time Sensitive HAZMAT worksheet Row 4; Use SOR filter function search for location and update SOR Incident	
4	Los Angeles	HAZMAT EF 10	10:00-11:00					See Time Sensitive HAZMAT worksheet Row 5	
5	Los Angeles	HAZMAT EF 10	11:30 PDT					See Time Sensitive HAZMAT worksheet Row 6	
6	Los Angeles	HAZMAT EF 10	11:45 PDT					See Time Sensitive HAZMAT worksheet Row 7	
7	Los Angeles	HAZMAT EF 10	12:30 PDT					See Time Sensitive HAZMAT worksheet Row 8	
8	San Bernardino	HAZMAT EF 10	13:00 PDT					See Time Sensitive HAZMAT worksheet Row 9	
9	Los Angeles	HAZMAT EF 10	13:00 PDT					See Time Sensitive HAZMAT worksheet Row 10	
10	Los Angeles	HAZMAT EF 10	13:30 PDT					See Time Sensitive HAZMAT worksheet Row 11	
11	Los Angeles	HAZMAT EF 10	13:30 -					See Time Sensitive HAZMAT worksheet Row 12	Turn on GIS layers, select appropriate layers e.g. liquefaction, fault rupture, landslide, model results, review incident considering geologic conditions,
12	Los Angeles	HAZMAT EF 10	14:00 PDT					See Time Sensitive HAZMAT worksheet Row 13	
13	Los Angeles	HAZMAT EF 10	14:30 PDT					See Time Sensitive HAZMAT worksheet Row 14	
14	San Bernardino	HAZMAT EF 10	15:00 PDT					See Time Sensitive HAZMAT worksheet Row 15	
15	San Bernardino	HAZMAT EF 10	15:00 PDT					See Time Sensitive HAZMAT worksheet Row 16	
16	San Bernardino	HAZMAT EF 10	15:15 PDT					See Time Sensitive HAZMAT worksheet Row 17	
17	Los Angeles	HAZMAT EF 10	15:15 PDT					See Time Sensitive HAZMAT worksheet Row 18	
18	Los Angeles	HAZMAT EF 10		8:30 PDT				See Time Sensitive HAZMAT worksheet Row 19	
19	Los Angeles	HAZMAT EF 10		8:30 PDT				See Time Sensitive HAZMAT worksheet Row 20	
20	San Bernardino	HAZMAT EF 10		9:00 PDT				See Time Sensitive HAZMAT worksheet Row 21	
21	San Bernardino	HAZMAT EF 10		9:00 PDT				See Time Sensitive HAZMAT worksheet Row 22	
22	San Bernardino	HAZMAT EF 10		9:30 PDT				See Time Sensitive HAZMAT worksheet Row 23	
23	San Bernardino	HAZMAT EF 10		9:30 PDT				See Time Sensitive HAZMAT worksheet Row 23	
24	Los Angeles	Damaged building	Any time after 11:30 a.m. PDT	All Day	All Day	All Day	All Day	Choose street location in Los Angeles County SOR: Incident-Structure-Building Description field should include the following: -Type of structure (e.g. single family, multi-family, mobile home, apartment, etc) -Level of damage (none, slight, moderate, extensive) -geologic or engineering observations (lateral spread, softstory structure, etc)	Suggested description: Single-family dwelling; 1-story; Moderate damage; Garage appears to be downdropped, detached, with respect to main house. Cracks observed in driveway with water and sand.
25	San Bernardino	Damaged road	Any time after 11:30 a.m. PDT	All Day	All Day	All Day	All Day	See Road Closure worksheet for locations and details; SOR: Incident-Road-Open OR Incident-Road-Closed Description field should include: -type of road e.g. elevated, overpass, exit ramp -Direction of travel e.g northbound lane -Level of Damage (none, slight, moderate, extensive) -If Open, describe any limitations e.g. two right lanes damaged and not drivable or all lanes ok -geologic or engineering observations (cracks in overpass but appear to be minor, non-structural) Other? - current traffic conditions	Non-elevated road; west bound direction, 4 lanes; slight damage: minor cracks in left lane, all 4 west bound lanes open; traffic very heavy but moving
26	San Bernardino	Damaged road	Any time after 11:30 a.m. PDT	All Day	All Day	All Day	All Day	Review map for incidents indicating potential for damage to following: -medical facilities (critical facility) -potable water (lifelines) -highway bridges (structure bridge)	

Directions Summary of Damage county-date Road Closures Time-Sensitive HAZMAT

READY 100%

Sneak Peek: NASA JPL data products for exercise



The screenshot shows the Google Earth interface with the E-DECIDER application overlaid. The map displays a mountainous region with several yellow and green circular markers representing data points. A popup window is open over one of the markers, displaying the following information:

Facility Type	HighwayBridge
Facility ID	CA024566
PGA	1.3925
PSA03	2.6902
PSA10	1.6720
Tag	Red
Prob. of No Damage	0.0439
Prob. of Slight Damage	0.1512
Prob. of Moderate Damage	0.1047
Prob. of Extensive Damage	0.1969
Prob. of Complete Damage	0.5032

Directions: [To here](#) - [From here](#)

The left sidebar shows the "Places" list with "Ardent Sentry 2015 Scenario" entries and "Cajon Pass" selected. The "Layers" panel shows "Primary Database" and "Borders and Labels" checked.

Participation demonstration



The screenshot shows a web browser window displaying a map of Southern California. A data popup is open over a location in the San Bernardino area, showing the following details:

- NAICSDESCR: HOMES FOR THE ELDERLY WITHOUT NURSING CARE
- GEOLINKID: 24372823
- X: -117.366
- Y: 34.1284
- ST_VENDOR: NAVTEQ
- ST_VERSION: 200902
- GEOPREC: ONENTITY
- PHONELOC:
- QC_QA: TECHNIGRAPHICS
- WEBSITE: HTTP://WWW.WALNUTSENIORHOME.COM/CONTACT_US.HTML
- FOODE: 90022
- GNIS_ID:
- SOURCE: TECHNIGRAPHICS
- FAC_TYPE: HOMES FOR THE ELDERLY (ASSISTED LIVING FACILITIES)
- TOT_STAFF: 0
- TOT_RES: 0
- BEDS: 6
- EXC_BEDS: 0
- OWNERSHIP:
- MEDICAIDID:
- MEDICAID:
- STATELICID:
- SUPFACTYPE: RESIDENTIAL CARE FOR THE ELDERLY
- ORIG_FID: 3267

Below the map, a list of hazards is displayed:

- Nursing home near fault and in area of high ground shaking**
observe fractures in ground with water and sand in nursing home parking lot, liquefaction present, may affect structure
Distance: 4.42 miles
0 Observations, 0 with media
- hospital**
Distance: 6.53 miles
1 Observations, 1 with media
- oil/gas pipeline fault crossing**
Distance: 8.7 miles
43 Observations, 39 with media

Create SpotOnResponse account



- Go to <https://app.spotonresponse.com> with your Android[®] phone or tablet, your iPad[®] or iPhone[®] or Web Browser and access with your username and password.
- No access? Use “Click here” to **register for access ... Project Code: userClearHouse.**
- Make sure to turn on Location Services and Pop-Ups or Allow when prompted.
- **Do NOT use “private” browser mode**

Questions?



To join the training and exercise, contact:

Anne Rosinski, Chair
California Earthquake Clearinghouse
(650) 688-6373
Anne.Rosinski@conservation.ca.gov

