



Cal OES

GOVERNOR'S OFFICE
OF EMERGENCY SERVICES

Clearinghouse Coordination with
Cal OES, State Operations Center,
Regions, and Local government

California Office of Emergency Services (Cal OES) Activation Process

- Begins with the Earthquake and Tsunami Program, Duty Officer
- California State Warning Center (CSWC)
- California Geological Survey
- Cal OES State Operations Center
- Cal OES Regional Operations Center

Standardized Emergency Management System (SEMS)

What is SEMS?

SEMS is the cornerstone of California's emergency response system and the fundamental structure for the response phase of emergency management. The system unifies all elements of California's emergency management community into a single integrated system and standardizes key elements.

SEMS

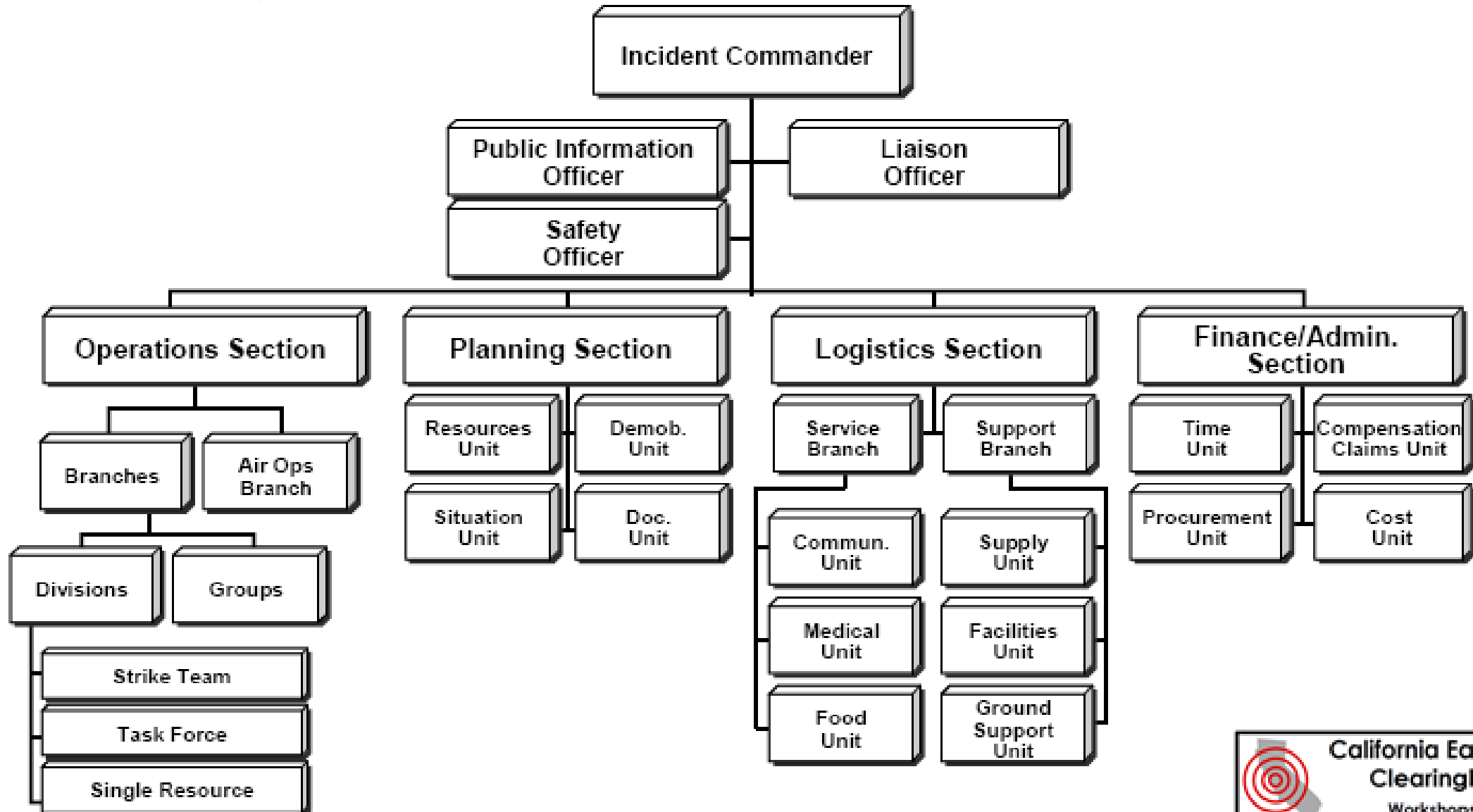
SEMS incorporates:

- **Incident Command System (ICS)** - A field-level emergency response system based on management by objectives
- **Multi/ Inter-agency coordination** - Affected agencies working together to coordinate allocations of resources and emergency response activities.
- **Mutual Aid** - A system for obtaining additional emergency resources from non-affected jurisdictions.
- **Operational Area Concept** - County and its sub-divisions to coordinate damage information, resource requests and emergency response.

SEMS and ICS

- Cal OES follows SEMS as required by the California Emergency Services Act
 - Emergencies and incidents are coordinated and managed at the lowest possible level
- Cal OES response and coordination in the field is in alignment with ICS
 - Emergency Operations Centers (EOCs) support field response
- Unified Command is when all agencies with a legal or jurisdictional responsibility coordinate together to mitigate the event or incident.

SEMS Organization Chart



Cal OES Responsibilities

The California Governor's Office of Emergency Services (Cal OES) responsibilities during emergencies:

- Protect health and safety of people
- Preserve their lives and property

To achieve these goals, Cal OES organized the state into mutual aid Regions:

- These are subdivisions of the state emergency services organization
- The structure facilitates coordination of mutual aid and other emergency operations between two or more county operational areas (OA's).



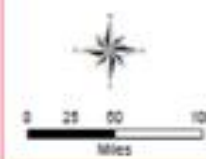
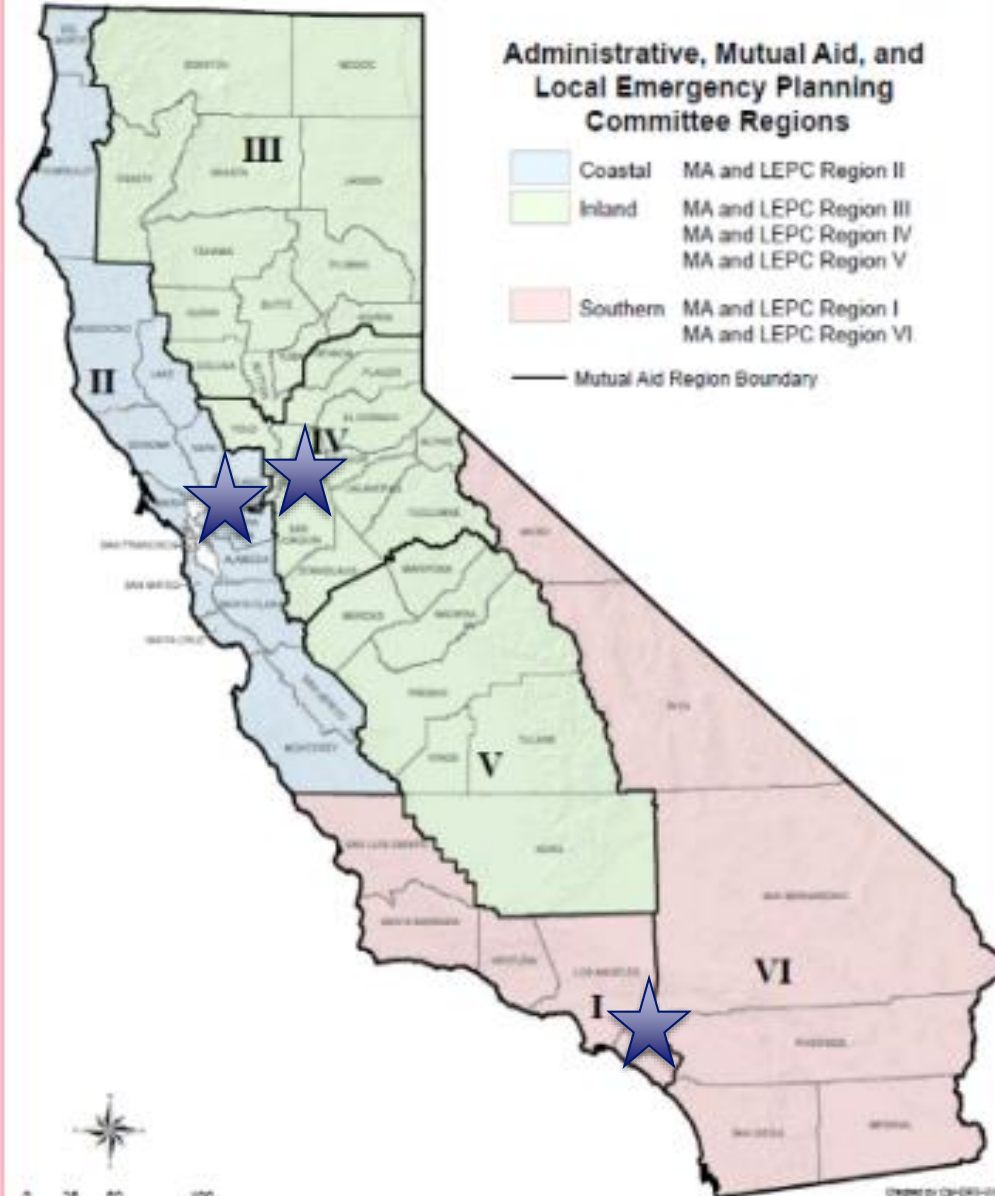
State of California

GOVERNOR'S OFFICE OF EMERGENCY SERVICES




Administrative, Mutual Aid, and Local Emergency Planning Committee Regions

- Coastal MA and LEPC Region II
- Inland MA and LEPC Region III
MA and LEPC Region IV
MA and LEPC Region V
- Southern MA and LEPC Region I
MA and LEPC Region VI
- Mutual Aid Region Boundary



Created by CA-OES-010
November 4, 2014
© 2014 State of California
LEPC/CAOES/LEPC_Regions.mxd

★ State and Regional Operations Centers



California Earthquake Clearinghouse
Workshops 2020

Clearinghouse Physical Location

- What is needed: A large facility in a safe location with inside space to work, hold evening briefings and an area to park vehicles
 - During COVID, screening and social distancing would be in place and PPE would be available for those in the facility
- Cal OES can “Mission Task” State Agencies to contribute resources during emergencies
 - Based on the event location and availability of state facilities in the area, coordinate to identify a potential Clearinghouse facility
- Earthquake and Tsunami Program Staff also coordinate with Cal OES Regional Staff working with local government to identify potential local facilities as well.

Communications

- After a large event Cal OES Earthquake and Tsunami Program and California Geological Survey staff will be at the State Operations Center (SOC) in Sacramento.
- Earthquake and Tsunami Program Staff may be in the field supporting local government or the Clearinghouse.
- Coordination of information between the SOC and Clearinghouse begins immediately after the event.
- Information will flow from the SOC to the Cal OES Multi-Region Coordination Center (MRCC) to the Cal OES Regional contacts to Local Government and in reverse
- The Cal OES SOC, REOC, MRCC, Local Government and others can all participate in the Clearinghouse briefing calls.

Emergency Management Priorities

- It is important to understand the scope and potential level of impact from the event:
 - Situation Status Reports
 - Media and Social Media Reports
 - Aftershock forecasts
 - Reports from the field, observations
 - Hazus runs that estimate levels of damage, injuries, and other impacts
- Scientific analysis from field observations and data with explanation of implications may not be known to the SOC unless highlighted by the Clearinghouse
 - After slip – repaired infrastructure may need more repair
 - Lateral spreading – cracking may continue in structures
 - Subsidence – settling of various types of soil, with increasing hazards due to large or continuous aftershocks

Clearinghouse Field Participants

- Are researchers, structural engineers, social scientists, and others
- Are Not First Responders, and not part of the incident field response
- Are not Building Inspectors; will not assess the safety of structures or “tag” buildings
- If they encounter a hazard are instructed to call 9-1-1 to report it to appropriate authorities
- Independently direct themselves to areas with physical features or damaged structures
- Also may investigate areas receiving high social media interest and may be able to provide clarification

Clearinghouse Briefings

- The calls are accessible by anyone who is on the Earthquake Clearinghouse email list or reaches out to EERI or CGS to be included in the call invitation
- Cal OES Earthquake and Tsunami Program SOC Technical Specialist distributes the call information in the SOC and Multi-Region Coordination Center (MRCC) to be further distributed to Operational Areas and local government
- When possible briefings are coordinated with SOC briefings to ensure inclusion of information in SOC briefings and reports
- Access to technical expertise from research, structural engineering and geologic subject matter experts

Clearinghouse Coordination

- Direct coordination between Cal OES and CGS ensures availability of the most current data and information
- Helps guide decisions, prioritization of resources, guide advance planning for subsequent operational periods (e.g. staffing)
- Includes the ability to reach back to Cal OES and/or CGS for technical explanations or clarification of a report or statement
- Includes the ability for local government or state agencies to connect with Cal OES and CGS to request information or review/visit of a specific location
- Receiving validated information on an area/location that may be receiving significant social media attention (Example: Unreinforced Masonry in Napa)–can be helpful for rumor control.

After Action/Hotwash

- When field investigations wind down, all remaining information is gathered and the physical site is closed
- Briefing calls may continue if data is still being received.
- A final call of the event Clearinghouse will occur.
- Earthquake Clearinghouse Management will begin to Draft an After Action Report for the activation and response.

In Closing

For additional information from the Cal OES Earthquake and Tsunami Program:

Sheri Blankenheim

Sharon.blankenheim@caloes.ca.gov

